



elap PLS-V PL2S-V PL231-V LINEAR POTENTIOMETERS WITH ANALOGUE OUTPUT

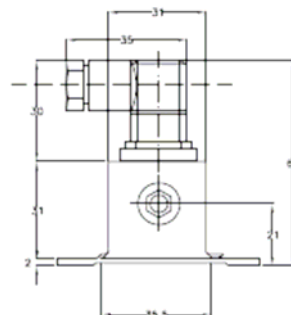
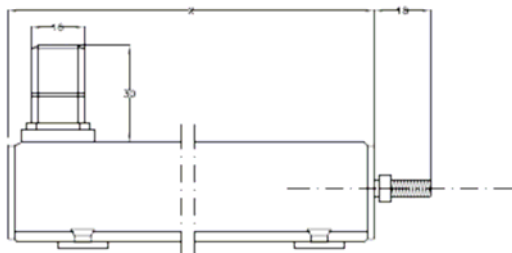
- 0÷10 Vdc voltage output proportional to the stem position
- Supply voltage 18÷30 Vdc
- Strokes: 50 to 950 mm
- Conductive plastic resistive element
- 20 million operations life
- Infinite resolution
- High linearity

- Moving speed up to 1 m/sec.
- Strong aluminium case
- Easy clamping by movable feet
- Electrical connections by orientable connector
- IP65 protection degree
- Available fittings (PLS-V series only): ball joint, out-of-alignment joint, feeler pin



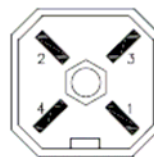
DIMENSIONS

SERIES PLS-V



Stroke	Body Length
50 mm	190 mm
100 mm	240 mm
150 mm	290 mm
200 mm	340 mm
250 mm	390 mm
300 mm	440 mm
400 mm	540 mm
500 mm	640 mm
750 mm	890 mm
950 mm	1090 mm

ELECTRICAL CONNECTIONS



SCHEMA DI COLLEGAMENTO	
PIN 1 = +	OUT 0 : 10V
PIN 2 = -	OUT 0 : 10V
PIN 3 =	0V
PIN 4 = +	18V : 30VCC
] ALIMENTAZIONE	



S.P.A. VIA VITTORIO VENETO, 4 – I-20094 CORSICO (MI) – TEL. ++39.02.4519561
FAX ++39.02.45103406 E-MAIL: INFO@ELAP.IT URL: WWW.ELAP.IT

POPHOF Antriebstechnik
Schützenstr. 14a, D-77933 Lahr

Tel. 07821-983 913
Fax 07821-983 914

info@pophof.de
www.pophof.de

